

46/159

159

PLAT NO. 1 WESTWOOD GARDENS (A P.U.D.)

LYING IN SECTION 35, TOWNSHIP 41 SOUTH, RANGE 42 EAST

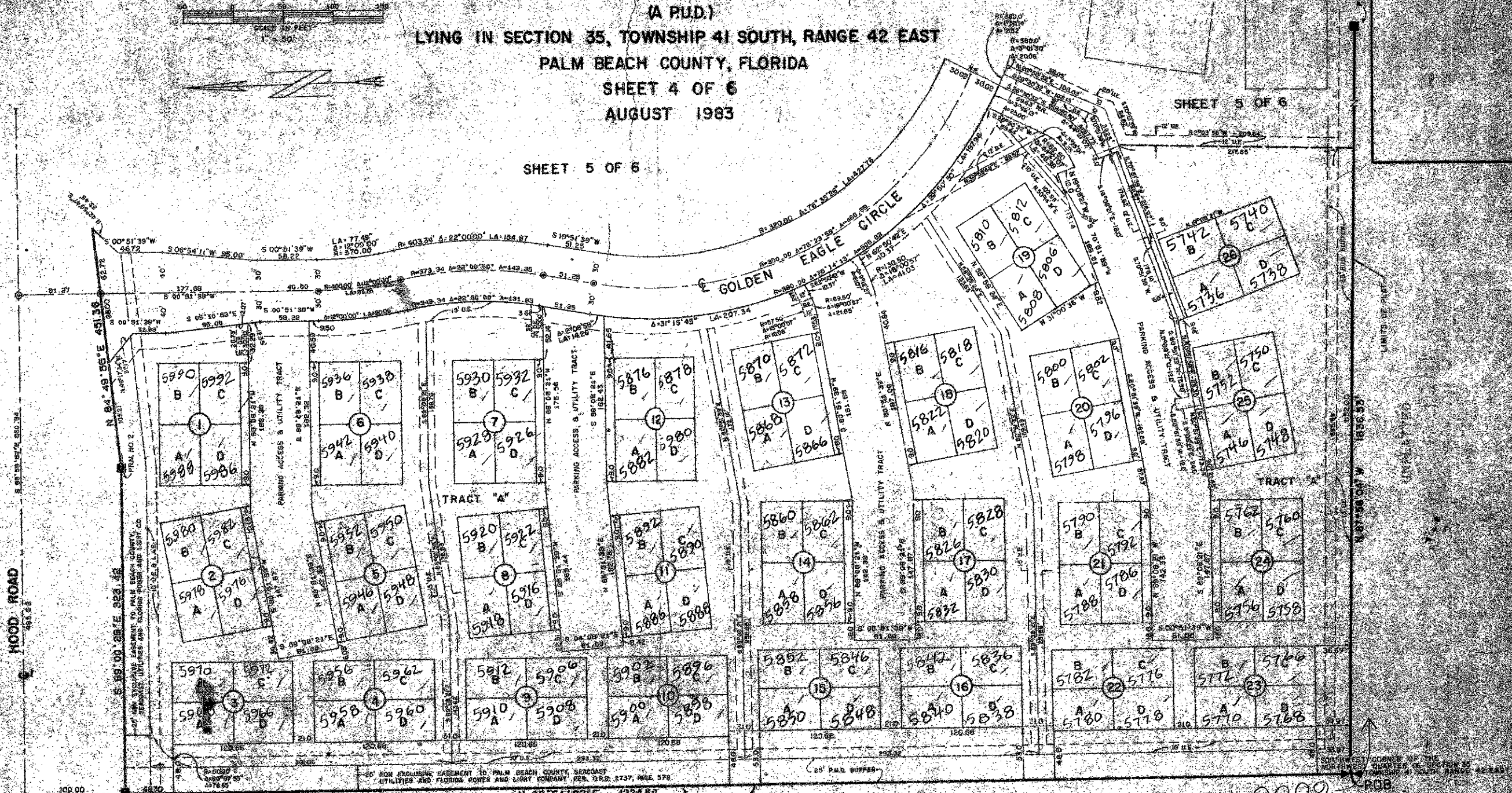
PALM BEACH COUNTY, FLORIDA

SHEET 4 OF 6

AUGUST 1983

SHEET 5 OF 6

SHEET 5 OF 6



Limits of Plat
West Line of Section 35-41-42

FLORIDA TURNPIKE R/W

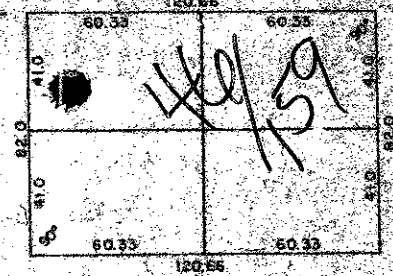
0009-PROB
PALM BEACH COUNTY
BRASS CAP IN CONCRETE

0379-001

SURVEYOR'S NOTES

ALL LOT LINES ARE 90° OFF
REFERENCE LINES UNLESS
SHOWN OTHERWISE

35/159
PAGE 157
PLAT NO. 1
WESTWOOD GARDENS
P.U.D.



TYPICAL TOWNHOMES LOT
DETAIL
SCALE 1"=30'

**PLAT NO. 1
WESTWOOD GARDENS
(A P.U.D.)**

WILLIAM E. BRIDGES, P.E.
CONSULTING ENGINEER, LAND PLANNER & SURVEYOR
1000 S. PALM BEACH BLVD., SUITE 200, PALM BEACH, FLORIDA 33480
TELEPHONE: (407) 833-1111

PROJECT	WESTWOOD GARDENS
DATE	AUGUST 1983
SCALE	1"=30'